

Modular Cooking Range Line
thermaline 90 - 20 lt Well Freestanding
Gas Pasta Cooker, 1 Side with
Backsplash, H=700 (Town Gas)

ITEM # _____
 MODEL # _____
 NAME # _____
 SIS # _____
 AIA # _____



593339 (MCKDEBDDVO)

20lt gas Pasta Cooker, one-side operated with backsplash, town gas

Short Form Specification

Item No. _____

Unit constructed according to DIN 18860_2 with 20 mm drop nose top and 70 mm recessed plinth. Internal frame for heavy duty sturdiness in stainless steel. 2 mm top in 1.4301 (AISI 304). Flat surface construction, easily cleanable. THERMODUL connection system enables seamless worktop when units are connected and avoids soil penetrating. Appliance which can also be used to cook noodles of every kind, rice, dumplings and vegetables. Water basin in 1.4435 (AISI 316L) stainless steel, with automatic constant water level re-fill regulation via sensor. High efficiency burners in AISI 430 stainless steel with flame failure device. Safety thermostat and thermostatic control. Energy Control for fine power adjustment to control boiling level and optimize energy consumption. Integrated drip tray to drain baskets. Compatible with automatic basket lifting system to facilitate lifting operations. Safety systems and automatic low-water level shut-off protect against overheating. All-round basin raised edges to protect against soil infiltration. Metal knobs with embedded hygienic silicon "soft" grip enable easier handling and cleaning. IPX4 water resistant certification. Configuration: Freestanding, One-side operated with backsplash.

Main Features

- In addition to cooking pasta, the appliance can be used for noodles of every kind, rice, dumplings and vegetables.
- Safety thermostat and thermostatic control.
- All major components may be easily accessed from the front.
- Easy to clean basin with rounded corners.
- THERMODUL connection system creates a seamless work top when units are connected to each other thus avoiding soil penetrating vital components and facilitating the removal of units in case of replacement or service.
- Metal knobs with embedded hygienic "soft-touch" grip for easier handling and cleaning. The special design of the controls prevents infiltration of liquids or soil into vital components.
- Large visible digital display manufactured in tempered glass to resist heat and chemicals, showing temperatures or power settings. The display also shows on/off status of the appliance and on/off status of the heating elements.
- Raised edge all around the well to protect from infiltration of dirt from worktop.
- Safety systems protect against overtemperature and can be manually reset.
- Electrical ignition powered by battery with thermocouple for added safety.

APPROVAL: _____

Construction

- 2 mm top in 1.4301 (AISI 304).
- Unit constructed according to DIN 18860_2 with 20 mm drop nose top and 70 mm recessed plinth.
- Flat surface construction with minimal hidden areas to easily clean all surfaces
- IPx4 water protection.
- Water basin in 1.4435 (AISI 316L) stainless steel is seamlessly welded into the top of the appliance.
- High efficiency burners in AISI 430 stainless steel with flame failure device.
- Internal frame for heavy duty sturdiness in stainless steel.

Sustainability



- EnergyControl: unique feature for fine power adjustment to control boiling level and optimize energy consumption.

Optional Accessories

• Connecting rail kit for appliances with backsplash, 900mm	PNC 912499	<input type="checkbox"/>
• Portioning shelf, 400mm width	PNC 912522	<input type="checkbox"/>
• Portioning shelf, 400mm width	PNC 912552	<input type="checkbox"/>
• Folding shelf, 300x900mm	PNC 912581	<input type="checkbox"/>
• Folding shelf, 400x900mm	PNC 912582	<input type="checkbox"/>
• Fixed side shelf, 200x900mm	PNC 912589	<input type="checkbox"/>
• Fixed side shelf, 300x900mm	PNC 912590	<input type="checkbox"/>
• Fixed side shelf, 400x900mm	PNC 912591	<input type="checkbox"/>
• Stainless steel front kicking strip, 400mm width	PNC 912630	<input type="checkbox"/>
• Stainless steel side kicking strips left and right, against the wall, 900mm width	PNC 912660	<input type="checkbox"/>
• Stainless steel side kicking strip left and right, back-to-back, 1810mm width	PNC 912663	<input type="checkbox"/>
• Stainless steel plinth, against wall, 400mm width	PNC 912935	<input type="checkbox"/>
• Stainless steel plinth, freestanding, 400mm width	PNC 912954	<input type="checkbox"/>
• Connecting rail kit for appliances with backsplash: modular 90 (on the left) to ProThermatic tilting (on the right), ProThermatic stationary (on the left) to ProThermatic tilting (on the right)	PNC 912981	<input type="checkbox"/>
• Connecting rail kit for appliances with backsplash: modular 90 (on the right) to ProThermatic tilting (on the left), ProThermatic stationary (on the right) to ProThermatic tilting (on the left)	PNC 912982	<input type="checkbox"/>
• Back panel, 400x700mm, for units with backsplash	PNC 913009	<input type="checkbox"/>
• 1 basket for 20lt pasta cooker	PNC 913036	<input type="checkbox"/>
• Stainless steel panel, 900x700mm, against wall, left side	PNC 913101	<input type="checkbox"/>
• Stainless steel panel, 900x700mm, against wall, right side	PNC 913105	<input type="checkbox"/>
• Endrail kit, flush-fitting, with backsplash, left	PNC 913117	<input type="checkbox"/>
• Endrail kit, flush-fitting, with backsplash, right	PNC 913118	<input type="checkbox"/>
• 2 baskets for 20lt pasta cooker	PNC 913135	<input type="checkbox"/>
• 4 baskets for 20lt pasta cooker	PNC 913136	<input type="checkbox"/>
• 2 baskets for 20lt pasta cooker	PNC 913137	<input type="checkbox"/>
• Support frame for 4 baskets for 20lt pasta cooker	PNC 913138	<input type="checkbox"/>
• Lid for 20lt pasta cooker	PNC 913148	<input type="checkbox"/>
• Endrail kit (12.5mm) for thermaline 90 units with backsplash, left	PNC 913208	<input type="checkbox"/>
• Endrail kit (12.5mm) for thermaline 90 units with backsplash, right	PNC 913209	<input type="checkbox"/>
• U-clamping rail for back-to-back installations with backsplash (to be ordered as S-code)	PNC 913226	<input type="checkbox"/>
• Insert profile d=900	PNC 913232	<input type="checkbox"/>
• Side reinforced panel only in combination with side shelf, for against the wall installations, left	PNC 913267	<input type="checkbox"/>
• Side reinforced panel only in combination with side shelf, for against the wall installations, right	PNC 913269	<input type="checkbox"/>



Electrolux
PROFESSIONAL

**Modular Cooking Range Line
thermaline 90 - 20 It Well Freestanding Gas
Pasta Cooker, 1 Side with Backsplash, H=700
(Town Gas)**

- Stainless steel lower side panel (12,5mm), 900x300mm, left side, wall mounted PNC 913643 ☐
- Stainless steel lower side panel (12,5mm), 900x300mm, right side, wall mounted PNC 913644 ☐
- Wall mounting kit for units - TL85/90 - Factory Fitted (H=700) PNC 913655 ☐



**Modular Cooking Range Line
thermaline 90 - 20 It Well Freestanding Gas Pasta Cooker, 1 Side with
Backsplash, H=700 (Town Gas)**
The company reserves the right to make modifications to the products
without prior notice. All information correct at time of printing.

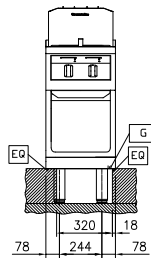
2025.05.16



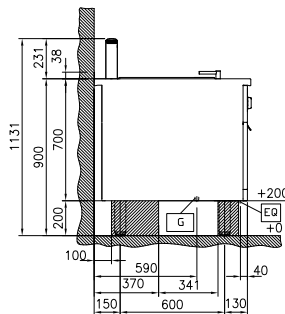
Electrolux
PROFESSIONAL

Modular Cooking Range Line
thermaline 90 - 20 lt Well Freestanding Gas
Pasta Cooker, 1 Side with Backsplash, H=700
(Town Gas)

Front

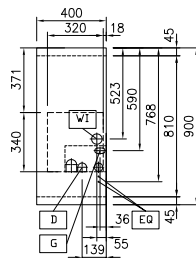


Side



D = Drain
EQ = Equipotential screw
G = Gas connection
WI = Water inlet

Top



Gas

Gas Power: 9.5 kW
Gas Type Option:
Gas Inlet: 1/2"

Water:

Incoming Cold/hot Water line
size: 3/4"
Drain line size: 1"

Key Information:

Number of wells: 1
Usable well dimensions
(width): 250 mm
Usable well dimensions
(height): 330 mm
Usable well dimensions
(depth): 400 mm
Well capacity: 18 lt MIN; 20 lt MAX
Thermostat Range: 40 °C MIN; 90 °C MAX
External dimensions, Width: 400 mm
External dimensions, Depth: 900 mm
External dimensions, Height: 700 mm
Net weight: 73 kg
Configuration: On Base; One-Side
Operated



Modular Cooking Range Line
thermaline 90 - 20 lt Well Freestanding Gas Pasta Cooker, 1 Side with
Backsplash, H=700 (Town Gas)
The company reserves the right to make modifications to the products
without prior notice. All information correct at time of printing.

2025.05.16